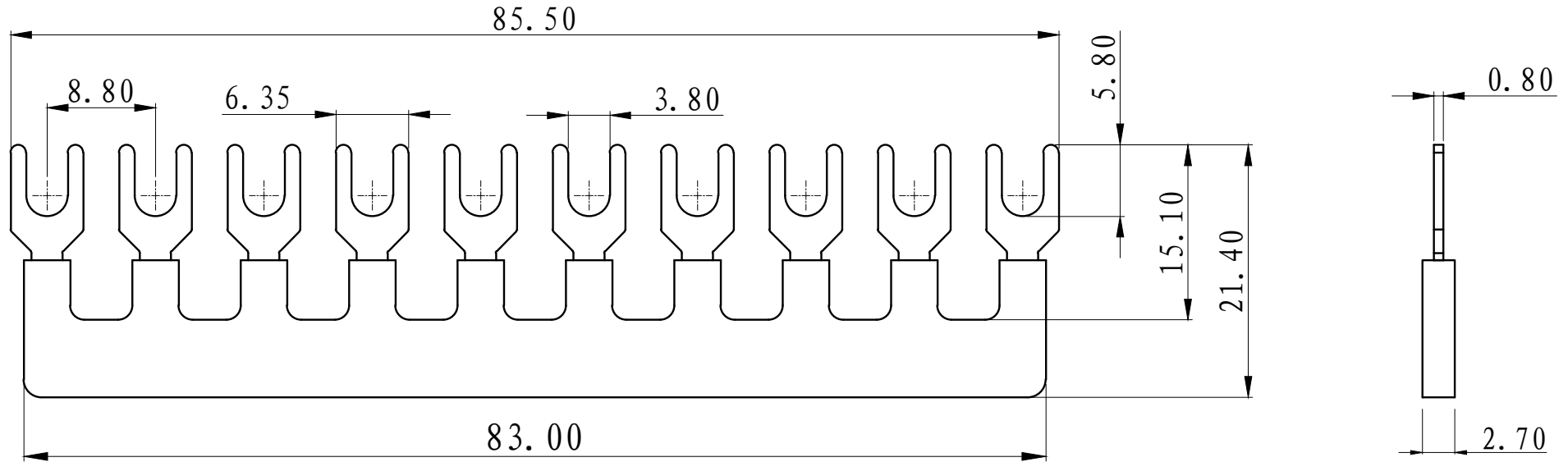


REVISION RECORD			
REV.	CONTENT	MOD.	DATE
△	初版发行		



	pitch dimension			Nominal dimension					— ▭ ⌒
	over 0	over 6	over 10	over 0	over 30	over 60	over 100	over 150	
variable range	to 6	to 10	to 24	to 30	to 60	to 100	to 150		
Tolerance	±0.1	±0.15	±0.25	±0.2	±0.3	±0.5	±0.7	±1.0	0.05/10

1	TB1-1510/10L边插件	6TB100Y010AV					
NO.	NAME OF PART	NO. OF PART			MATERIAL	NOTES	
DES.	ZD	DATE	21-12-27	UNITS	mm	THIRD ANGLE PROJECTION	
CHK.		DATE		SIZE	A4	1 of 1	
APP.		DATE		SCALE	1:1	DWG NO.	SP-2-6TB1001 REV: V0
上海联捷电气有限公司 Shanghai Elinker Electric CO.,LTD						TITLE	TB1-1510/10L边插件
							TB1-1510/10L边插件