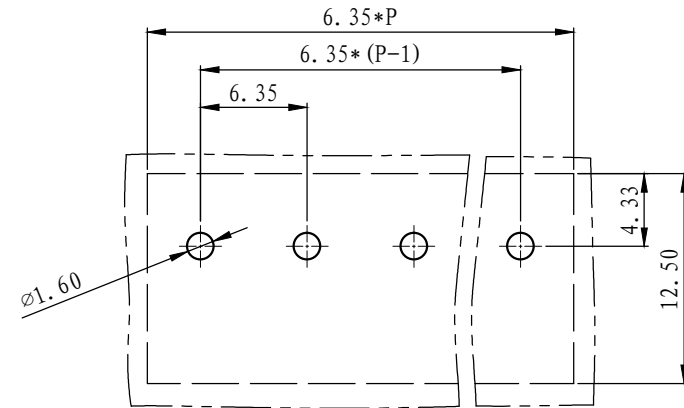
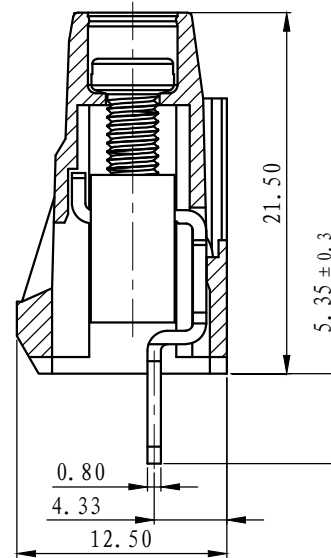
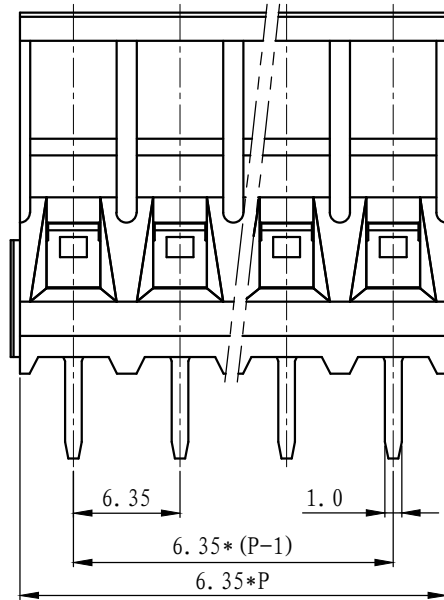
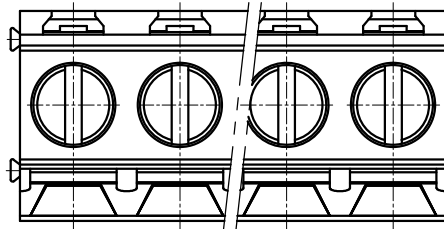


REVISION RECORD			
REV.	CONTENT	MOD.	DATE
△	初版发行		



NOTES:  
 Pitch: 6.35mm  
 Rated Voltage: 300V  
 Rated Current: 30 A  
 Withstand Voltage:  
 AC2500V for 1 minute  
 Insulation Resistance:  
 500MΩ / DC500V  
 Using Temperature Range:  
 -40°C ~ +105°C  
 Wire range: 24~10 AWG  
 Screw Torque Value: 0.5Nm

技术要求:  
 间距: 6.35mm  
 额定电压: 300V  
 额定电流: 30A  
 耐电压值: AC2500V/min  
 绝缘阻抗: 500MΩ/DC500V  
 使用条件: -40°C~+105°C  
 适用线规: 24~10 AWG  
 螺丝扭矩: 0.5Nm

	pitch dimension			Nominal dimension					— /
	over 0	over 6	over 10	over 0	over 30	over 60	over 100	over 150	
variable range	to 6	to 10	to 24	to 30	to 60	to 100	to 150		▱ ○
Tolerance	±0.1	±0.15	±0.25	±0.2	±0.3	±0.5	±0.7	±1.0	0.05/10

4	LG636-铜方块	F1A0BLG6363V	P	黄铜	镀镍
3	M3*6.6(一字)	SPOYA306601V	P	碳钢	三价铬钝化彩锌
2	LG636-焊脚	2003B0001AV	P	黄铜	镀雾锡
1	LG636-6.35-本体(拼接)	2003A0YXXAVP	1	PA66-V0	
NO.	NAME OF PART	NO. OF PART	Q' TY	MATERIAL	NOTES
DES.	ARKINE	DATE	2010/9/7	UNITS	MM
CHK.		DATE		SIZE	A4
APP.		DATE		SCALE	1:1
				DWG NO.	SP-2-200301
				REV:	V0
 <b>上海联捷电气有限公司</b> Shanghai Elinker Electric C.O.,LTD				TITLE	LG636-6.35-XXP-1Y-00A
					LG636-6.35-成品(拼接)