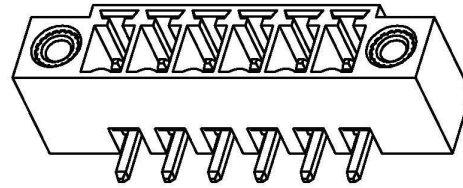
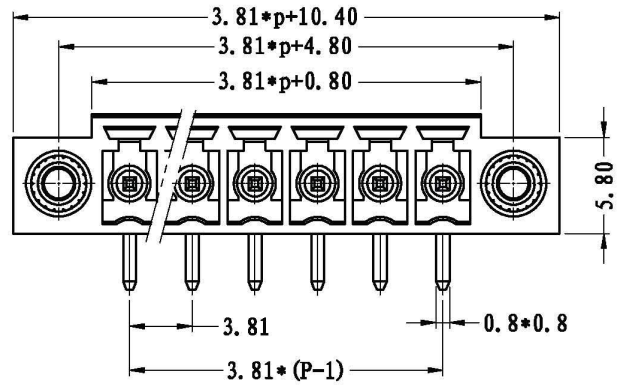
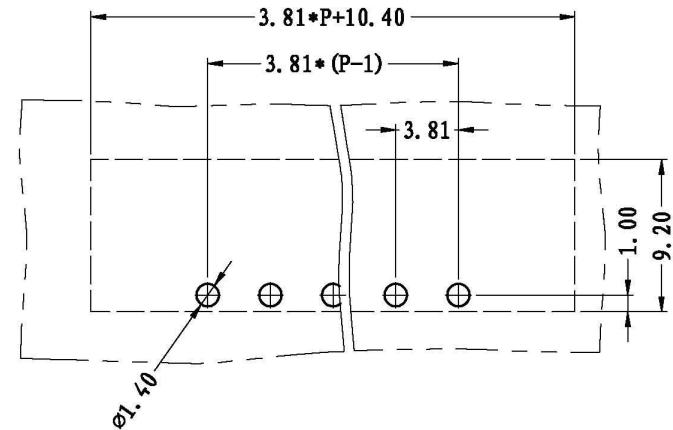
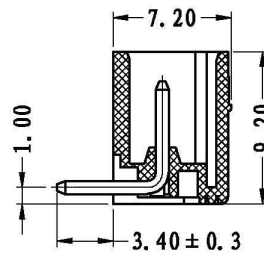
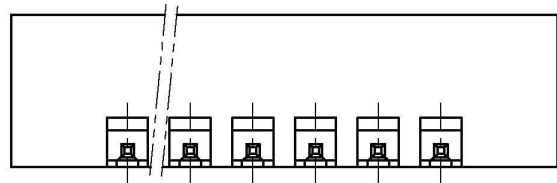


REVISION RECORD			
REV.	CONTENT	MOD.	DATE
①	初版发行		



NOTES:
 Pitch: 3.81mm
 Rated Voltage: 300V
 Rated Current: 8 A
 Withstand Voltage:
 AC2500V for 1 minute
 Insulation Resistance:
 5MΩ / DC500V
 Using Temperature Range:
 -40℃ ~ +105℃

技术要求:
 间距: 3.81mm
 额定电压: 300V
 额定电流: 8A
 耐电压值: AC2500V/min
 绝缘阻抗: 5MΩ/DC500V
 使用条件: -40℃ ~ +105℃



	pitch dimension			Nominal dimension					—
	over 0	over 6	over 10	over 0	over 30	over 60	over 100	over 150	
variable range	to 6	to 10	to 24	to 30	to 60	to 100	to 150		□
Tolerance	±0.1	±0.15	±0.25	±0.2	±0.3	±0.5	±0.7	±1.0	0.05/10

3	LZ1-耳朵螺母	SMO0B250000V	2	黄铜	
2	LZ1-3.81-弯针	1003B0002AV	P	黄铜	镀雾锡
1	LZ1M-3.81-本体	1003M0YXXAV	1	PA66	
NO.	NAME OF PART	NO. OF PART	Q'TY	MATERIAL	NOTES
DES.	ARKINB	DATE	2010/7/21	UNITS	MM
THIRD ANGLE PROJECTION					
CHL.		DATE		SIZE	A4
APP.		DATE		SCALE	1:1
DWG NO.	SP-2-1003001				REV: V0
TITLE	LZ1RM-3.81-XP-1Y-00A				
	LZ1RM-3.81-成品				

上海联捷电气有限公司
 Shanghai Hlinker Electric C.O., LTD