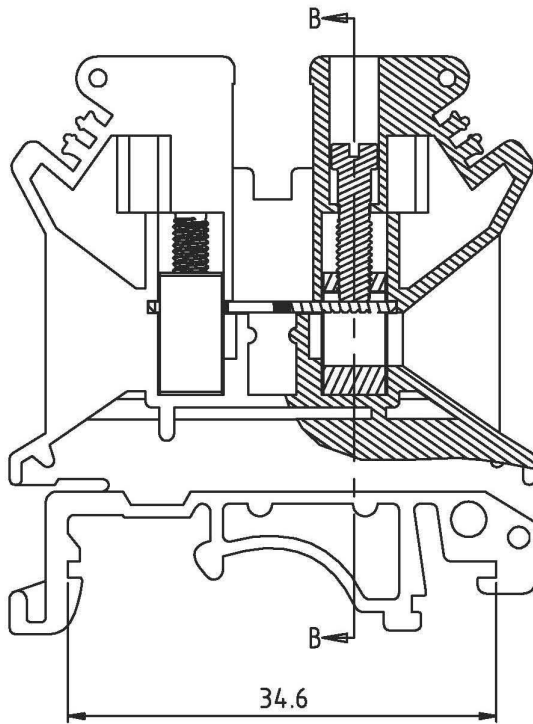
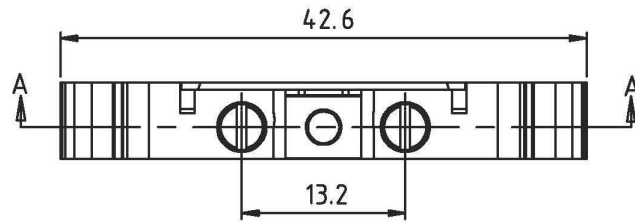
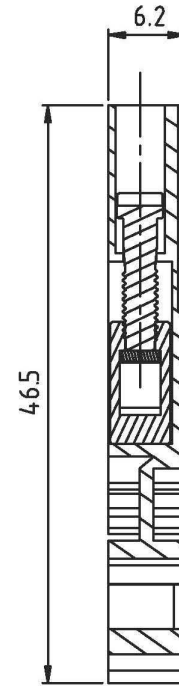


REVISION RECORD			
REV.	CONTENT	MOD.	DATE
△			



SECTION A--A



SECTION B--B

电气性能	
电压	800V
电流	41A
刚/柔性导线	0.2-6/0.2-4mm ²
线规AWG	24-10
螺钉类型/扭力	M3/0.5-0.6Nm
绝缘材料类型	PA66
阻燃级别	V0

TOLERANCES EXCEPT AS NOTED

variable range	linear dimension					fillet	chamfer		short angle			sid	≡	-	□	//	⊥
	to 6	over 6 to 30	over 30 to 120	over 120 to 480	over 480 to		to 6	over 6 to 10	to 10 to 50	over 50 to 120	to 120 to 10'						
Tolerance	±0.1	±0.2	±0.3	±0.5	±0.9	±0.2	±0.5	±1	1°	30'	20'	10'	0.3	0.025	0.06	0.12	0.4

NO.	NAME OF PART	NO. OF PART	Q'TY	MATERIAL	NOTES
DES.	DATE	10/04/05	UNITS	MM	THIRD ANGLE PROJECTION SHEET
CHK.	DATE		SIZE	A4	of
APP.	DATE		SCALE	1:1	DWG NO.
 上海联捷电气有限公司 Shanghai Bliker Electric C.O.,L'D					TITLE
					UK5N